



MPOWERING YOU

www.tcdmagic.com

DESIGNED IN FRANCE | ADVANCETC CILICON

MAGIC

X6L 32 / 64 / PLUS

WHITE / GRAY



Designed using the latest technologies and built with immaculate craftsmanship, the new MAGIC X6L is a fusion of metal & glass that is both elegant and robust for everyday use.

Full high definition display and quality cameras, with best in class Qualcomm Snapdragon CPU and abundant memory ensures the MAGIC X6L is up to par with the most demanding tasks.

The MAGIC X6L Smartphone is truly an all round star performer, and the device that will empower your life with style and performance.

MAGIC X6L SPECIFICATIONS

NETWORK Quad Band GSM (850/900/1800/1900MHz)
4G LTE (bands 1/3/7/20)
Quad band WCDMA (850/900/1900/2100 MHz)
HSPA+ (21Mbps)
Dual Nano SIM

DISPLAY 5.5 inch Full HD (1080x1920) Anti Glare IPS LCD Display
Corning Gorilla 3D Glass Multitouch Capacitive Touchscreen
Front Status LED

PLATFORM SYSTEM Qualcomm Snapdragon 625 8 Core A53 2.2GHz
Adreno 506 Advanced Graphic Processor
Google Android OS v7 (Nougat)

| MEMORY | X6L625 32GB | X6L625 64GB | X6L625 64GB PLUS |
|--------|----------------|----------------|------------------|
| | 32GB / 3GB RAM | 64GB / 3GB RAM | 64GB / 4GB RAM |

CAMERAS Main Camera 16MP Auto Focus with f/2.0 aperture
Selfie Camera X6L 32/64GB (8MP) / X6L 64G PLUS (13MP)
Phase Detection Auto Focus (PDAF)
Electronic Image Stabilization (EIS) - 4K Video - Digital Zoom
Auto HDR / Manual Focus and Exposure Control
Active Viewfinder (Recognize QR Codes and Barcodes)
LED Flashlight

WIRELESS WiFi 802.11ac, 802.11b/g/n
Bluetooth 4.0 LE (Low Energy Consumption)
GPS, AGPS and GLONASS
Near Field Communication (NFC)

SENSORS Proximity and Light Sensor, Accelerometer and Compass
Fingerprint Sensor, Hall Sensor

AUDIO Front Speaker with Amplifier, Stereo Sound & Equalizer
FM Radio Receiver

BATTERY Lithium Ion (4.35V) 3,500 mAh
Quick Charge Capability with Compatible Charger
Optional Extended Battery Casing (4,500 mAh)

PORTS Micro USB Type C for Charging and Data
3.5mm Headphone Jack
Combo Tray for SIM1+SIM2/MicroSD up to 128GB

PHYSICAL Metal & Glass Back Casing (Silver/Black Metal/Rose Gold)
75.5mm x 149mm x 8mm, 166 g

* specifications & features subject to change without prior notification

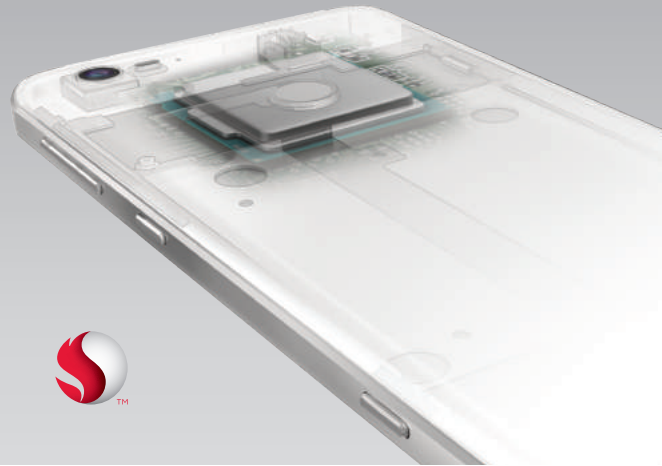


X6L

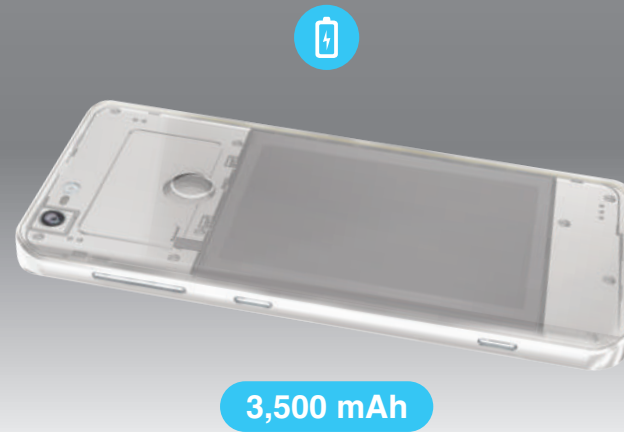
MAGIC

DESIGNED IN FRANCE | ADVANCETC CILICON

MAGIC X6L MPOWERING PERFORMANCE



MAGIC X6L MPOWERING ENDURANCE



MAGIC X6L MPOWERING EXPRESSION



MAGIC X6L MPOWERING DURABILITY



POWERFUL PLATFORM

At the heart of the MAGIC X6L is a Qualcomm Snapdragon 625 platform processor, the best in class processor to ensure optimum performance

LATEST OPERATING SYSTEM

The MAGIC X6L operates with Google's latest Android 7 Nougat operating system that comes packaged with the latest software innovations

DEDICATED GRAPHICS PROCESSOR

The MAGIC X6L is integrated with an Adreno 506 graphics processor for dedicated graphics processing which makes multimedia playback silky smooth

MASSIVE MEMORY

With up to 4GB RAM & 64GB internal storage (expandable to 128GB via SD card), the MAGIC X6L has ample memory for multitasking and storage

BIG BATTERY

Our engineers have optimized a larger battery into the MAGIC X6L making it last much longer compared to devices of a similar size.

QUICK CHARGE

The MAGIC X6L is equipped and compatible with Qualcomm Quick Charge technology that quickly replenishes the battery up in just a few minutes

SYSTEM OPTIMIZATION

New 14nm (nanometer) technology allows the MAGIC X6L platform to be even more efficient and power saving than ever before

CUSTOM ADD ON

For even greater lasting battery life, the MAGIC X6L is designed to have an interchangeable back casing add-on that extends the battery to 4,500 mAh

PHASE DETECTION AUTOFOCUS

Capture the perfect moment shot quicker with Phase Detection Auto Focus which uses two sensors arrays to optimize the picture to the most accurate point

APERTURE f/2.0

The MAGIC X6L camera comes with wider f/2.0 aperture for more picture perfect shots with better focus, brightness and clarity

ELECTRONIC IMAGE STABILIZATION

Integrated Electronic Image Stabilization technology automatically corrects sudden movement or shaking to prevent blurry pictures or video shots

4K VIDEO

4K Ultra-High Definition recording marks the next evolutionary step with 4x resolution of full HD video, it gives users incredible clarity for any video recording

IP67 RESISTANCE

The MAGIC X6L is encased in a fully dust and dirt resistant body, and is also resistant to full immersion in water liquids up to 1 meter for 30 minutes

SOLID ALUMINIUM BODY

Crafted from a solid block of Aluminium, the casing of the MAGIC X6L is robust, durable and lightweight, for a perfect feel in the palm of your hand

3D GORILLA GLASS

The IPS wide viewing angle LCD is coated with an anti glare layer and protected by Corning Gorilla 3D Glass for ultra high resistance to shock and scratches